

DATASHIELD

MANAGED LOCAL AND REMOTE BACKUPS

Keep your company safe from disaster by ensuring your business data is always available for restore. Eliminate disruptions due to faulty tape drives, tapes, or inconsistent backup management. DataShield securely backs up and stores data across the Internet as well as locally providing disaster protection and quick restores. Stay focused on your business and let DataShield protect your data.

The Impact of Data Loss

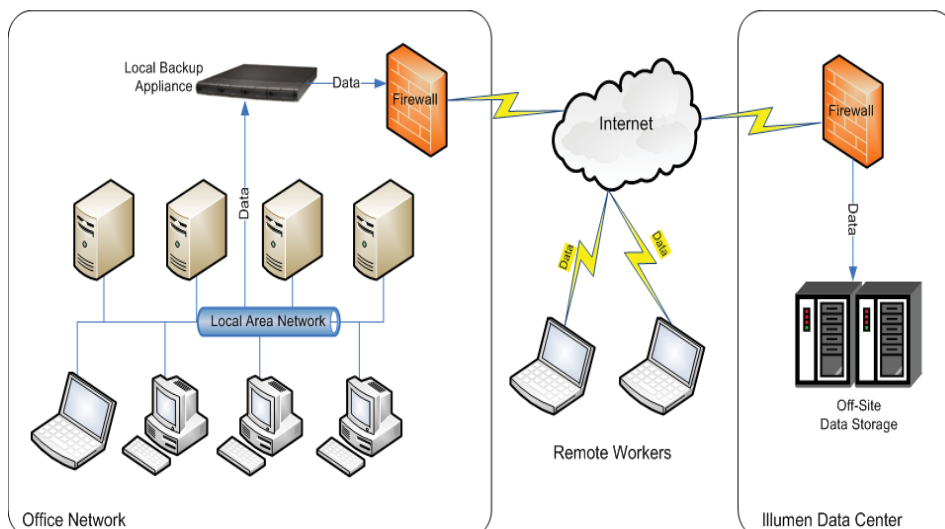
You cannot be too careful when it comes to securing and preparing for disaster. Losing critical data could cripple or terminate business operations altogether. According to a study by the University of Wisconsin, of the companies that lose their data in a disaster:

- 29% are out of business within two years
- Nearly 40% never reopen their doors after the disaster

Recover Critical Data with Certainty

DataShield ensures a reliable recovery even if internal backups have failed. With a multi-tiered backup system securing critical data, your business will be prepared to recover from a security breach, hardware failure, system outage, even a disaster that causes physical damage to the business premises.

DataShield Architecture



DISTRIBUTED ENVIRONMENTS

The office has changed drastically in the last several years. Many companies no longer have a single office where everyone shows up to work.

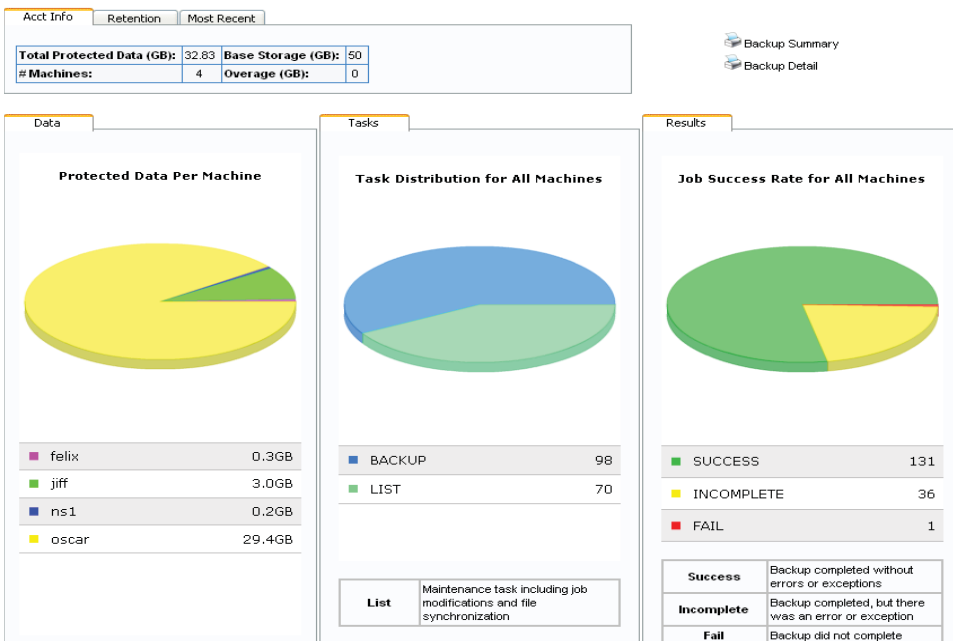
When your staff are working on the road, in the field, from home or in a branch office, it becomes increasingly difficult to make sure the data they work with gets backed up reliably.

DataShield provides a remote backup solution that is ideal for distributed computing environments by enabling data on remote office computers to be securely and reliably backed up over the Internet.

MANAGED DATA PROTECTION

DataShield couples advanced data protection technology with an experienced team of data storage and recovery specialists to provide secure and reliable data restores when you need them:

DATASHIELD FEATURE	DESCRIPTION
Off-site Data Backups	<ul style="list-style-type: none"> Critical data is available for restore from multiple resources to accommodate for backup failures Data is backed up over the Internet and stored on redundant disk arrays Data is protected from disasters that cause physical damage to the business premises A variety of retention periods from 7 days to seven years are available and determined per client
Local Data Backups	<ul style="list-style-type: none"> All data can be stored locally on a storage appliance for redundant data protection Large data stores can be restored quickly over the LAN
Automated Service	<ul style="list-style-type: none"> Backups execute automatically, removing human errors such as the failure to rotate tapes Backup windows can be configured to automatically stop backups after a certain time to accommodate for work hours or schedules of important batch processes
Monitored and Managed	<ul style="list-style-type: none"> Backup jobs are monitored for successes and failures using Illumen's proprietary Servoyant® Active Monitoring Errors that prevent successful backups are investigated by Illumen's engineering team to determine and address the underlying causes
Data Compression and Deduplication	<ul style="list-style-type: none"> Raw data from your network servers is reduced to a size that can be transmitted over the WAN Costs are lowered by reducing data storage requirements by as much as 4:1 Data is never transmitted offsite more than twice saving the bandwidth to transmit only new, unique data
Continuous Data Protection	<ul style="list-style-type: none"> Backup files automatically as they are saved to ensure no loss of recent work Reduce the size of backup windows by backing up files as they change
Security	<ul style="list-style-type: none"> Data is transferred across the Internet and stored using 448-bit blowfish encryption All data is stored in an encrypted state and cannot be viewed while in storage All data is stored in a world class data center with highly restricted physical security that is monitored 24 X 7
Ease of Deployment	<ul style="list-style-type: none"> With no hardware or software to purchase or install, DataShield saves both time and money DataShield can be setup and activated in less than one hour



REPORTING CONSOLE

Get the information you need in the way you need it.

DataShield reports are available through an online console and provide information tailored for different user groups.

Find out quickly the status of your last two weeks of backups. For more detailed information, drill down to view the backup logs of individual jobs.